

# LIBRARIES

---

INSPIRED SPACES FOR LEARNING



# TRANSFORMING SPACES

## TO MEET TODAY'S NEEDS

As academic and public libraries change to meet the needs of their students and communities, staff face the challenge of providing access to information, adaptability for the future, accommodating patrons' many work styles, and providing spaces for different types of activity. All the while finding room for modern uses while still accommodating ever-growing collections of books and other materials.

Whether your institution is planning for a brand-new library, a major renovation, or simply a more effective floor plan, Spacesaver can help. Our USA-made solutions help provide convenient access to materials while also freeing up space for social distancing or other uses.

With support from your nearby Spacesaver distributor and a variety of purchasing options to choose from, you can get started today and create inspired spaces for learning.

### ✓ PROTECT MATERIALS

- » Prevent damage
- » Avoid loss
- » Secure archival items and special collections

### ✓ SERVE PATRONS

- » Create space for modern uses
- » Promote browsing
- » Ensure quick, convenient access to materials

### ✓ SAVE SPACE

- » Store more materials in a smaller footprint
- » Eliminate wasted space in idle aisles
- » Optimize space on shelving

### ✓ EMPHASIZE AESTHETICS

- » Integrate colors, graphics, and finishes
- » Choose colors and finish materials
- » Use storage as a design element

# OPEN SPACES

INCREASE CAPACITY OR FREE UP SPACE FOR  
MEETING ROOMS, MAKERSPACES, OR OTHER  
USES WITH HIGH-DENSITY MOBILE SYSTEMS

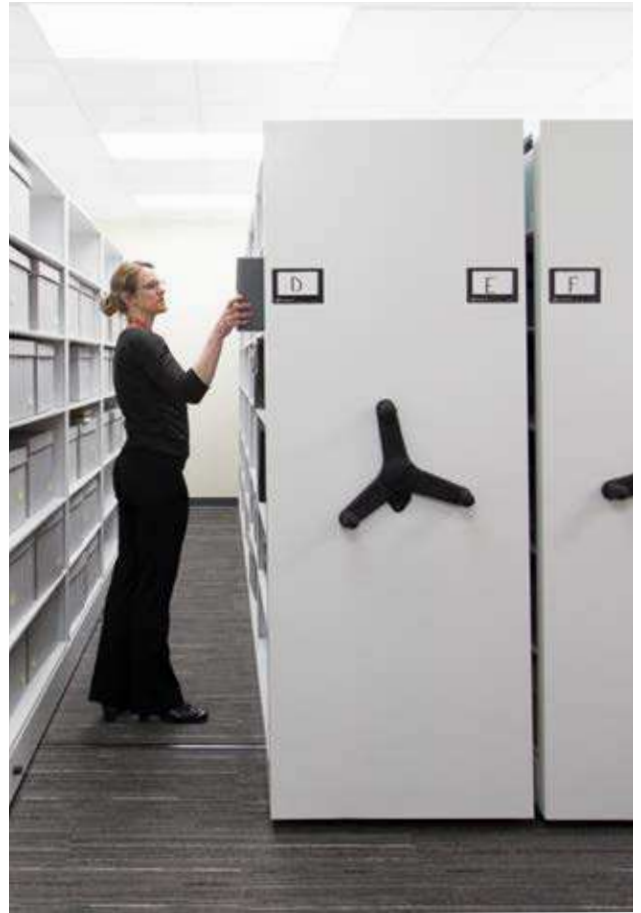






## ✓ MECHANICAL-ASSIST SYSTEMS

- » Move thousands of pounds with minimal effort
- » Lock aisles to prevent unexpected movement





## ✓ POWERED SYSTEMS

- » Open aisles via app or with the press of a button
- » Limit access to authorized users
- » Ensure safety with advanced features









## ✓ FLEXIBLE KIOSKS

Create a secure marketplace within the library or store makerspace equipment, books on hold, and other items in kiosks that expand when an area is staffed and close and lock after hours.



Kiosks slide along rails and lock securely.

Half-height kiosks create a convenient work surface with storage inside.



## ✓ KEEP IT SECURE

Lock aisles to protect special collections or other valuable materials.

- » Shelving with doors
- » PIN / Badge Access
- » Mechanical Locks





## ✓ SAFETY FIRST

Keep patrons and staff safe with the latest safety innovations.



Minimize high touch surfaces with the TUSC mobile app.



# THE PERFECT [SHELVING] PLATFORM

KEEP MATERIALS ORGANIZED AND ACCESSIBLE  
ON PURPOSE-DESIGNED SHELVING.

INSPIRED SPACES FOR LEARNING





## ✓ CANTILEVER SHELVING

Spacesaver's cantilever shelving is the time-tested classic.



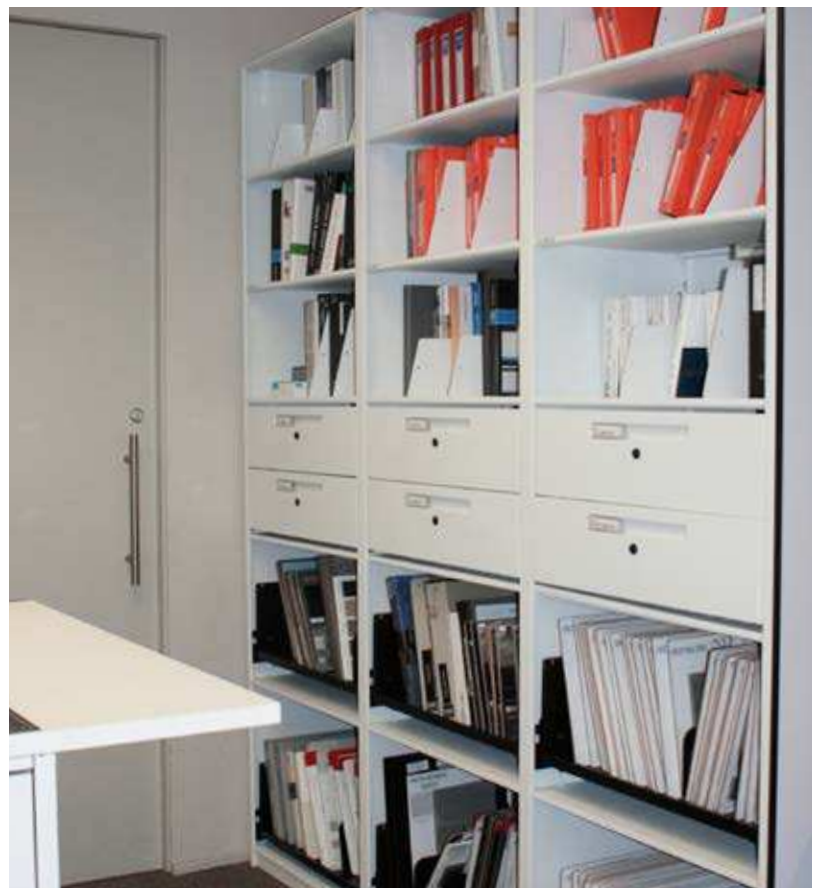
Pull-Out browsing bins provide convenient access to books, CDs, and other media



## ✓ 4-POST SHELVING

Customize shelving in maker labs, staff areas, and other spaces with a variety of accessories.

- » Dividers
- » Drawers
- » Pull-out reference shelves
- » Locking doors







## ✓ FLEXIBLE SHELVING

Mount shelving on visible or concealed casters to create flexible layouts.



# SLEEK [LOCKERS] SECURITY

PROTECT LIBRARY MATERIALS, STAFF BELONGINGS,  
AND WORK IN PROGRESS WITH DAY USE LOCKERS.  
STEEL LOCKER FRAMES ARE DURABLE AND  
RECONFIGURABLE, AND SLEEK OVERLAY DOORS  
COORDINATE WITH OTHER DESIGN ELEMENTS.







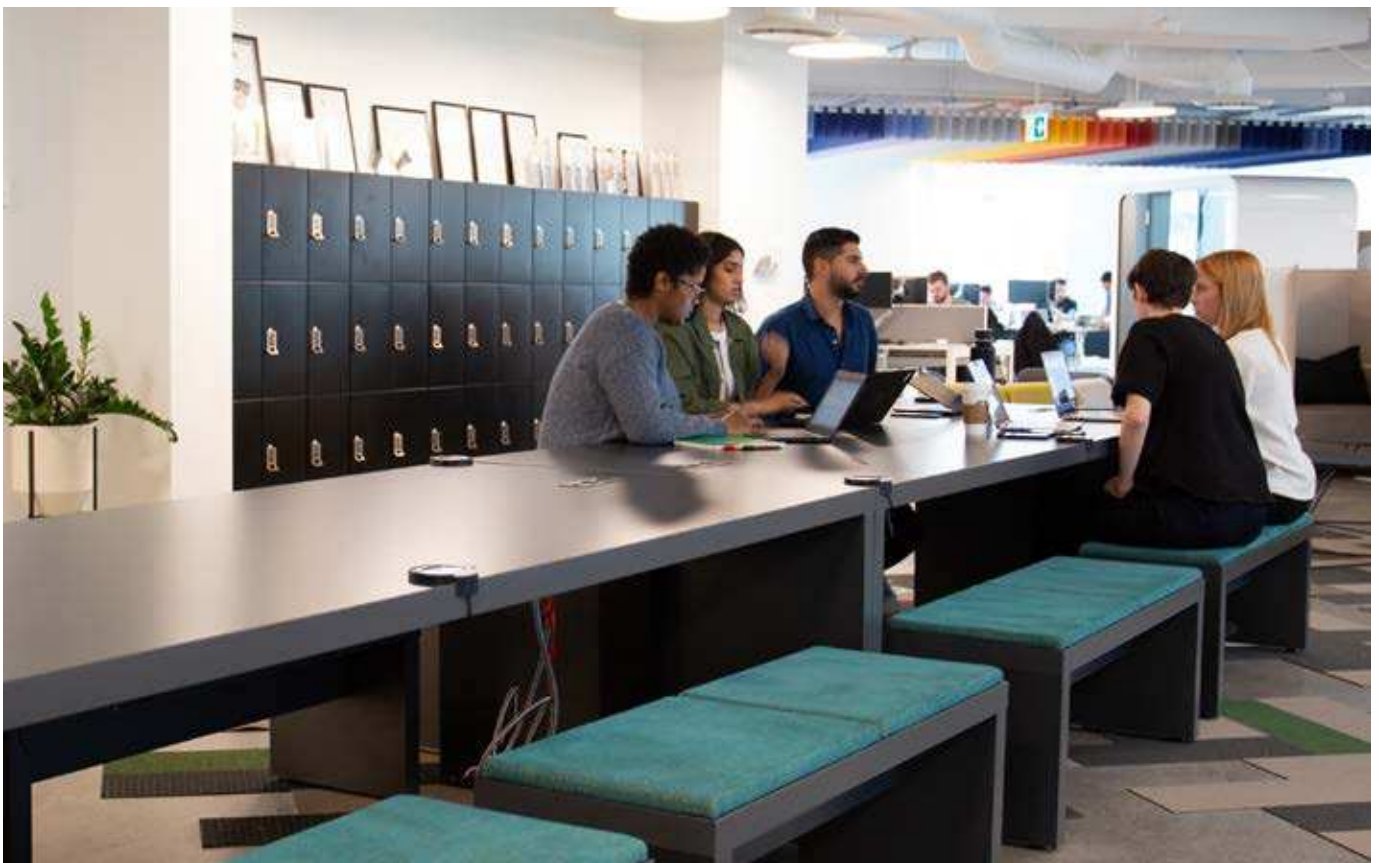
## ✓ LOCK OPTIONS

- » RFID
- » Keypad
- » Mechanical Combination



## ✓ AESTHETICS

Full overlay doors and locker surrounds in your choice of steel, laminate, or wood offer endless design options.





## ✓ CONFIGURATIONS

Choose the configuration that best suits your needs now, and then move or reconfigure the lockers' sturdy steel frames in the future.



### ISLAND

Lockers provide seating or a work surface

### PARTITION

Divide a large space into smaller areas



### BUILT-IN

Turn unused walls into productive storage

# INSPIRED DESIGN

LIBRARY SHELVING, LOCKERS, AND OTHER STORAGE SOLUTIONS CAN BE AS AESTHETICALLY PLEASING AS THEY ARE PRACTICAL. CONNECT WITH PATRONS AND THE CAMPUS COMMUNITY WITH COLORS, FINISHES, AND LAYOUTS.





✓ **CREATIVE LIGHTING**

Efficient LED lighting integrates with shelving to brighten the stacks



Incorporate lighting fixtures that reflect other interior design elements









## ✓ FINISHES

Wrap shelving, carts, lockers, and high-density systems in wood, laminate, custom graphics, or virtually any other material.











# SPACE FOR CHANGE

FREE UP VALUABLE SPACE IN LIBRARIES BY  
STORING INFREQUENTLY ACCESSED VOLUMES,  
ART, AND OTHER MEDIA IN OFF-SITE FACILITIES.





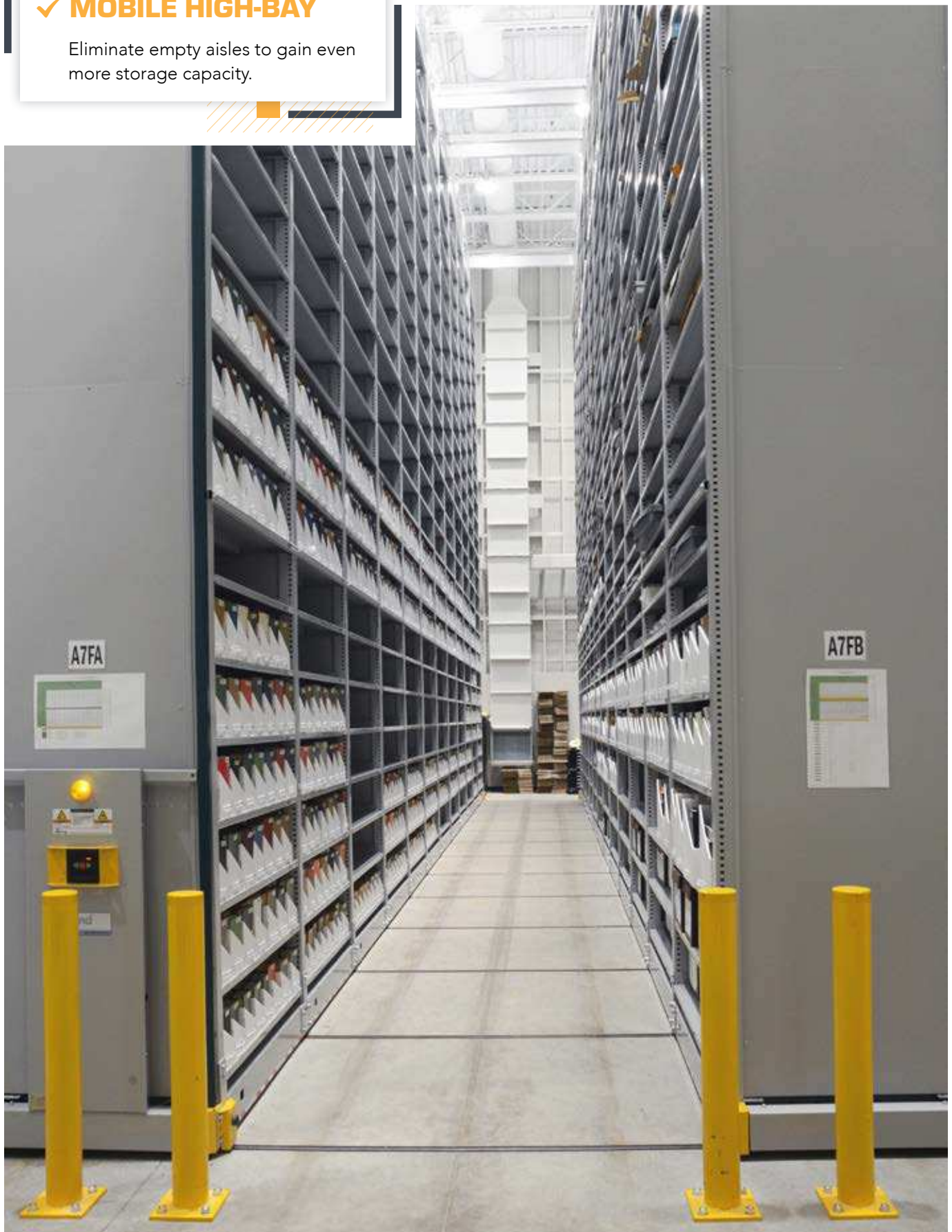
## ✓ **STATIC HIGH-BAY**

Static, or stationary, high-bay systems take full advantage of a facility's vertical height.



## ✓ **MOBILE HIGH-BAY**

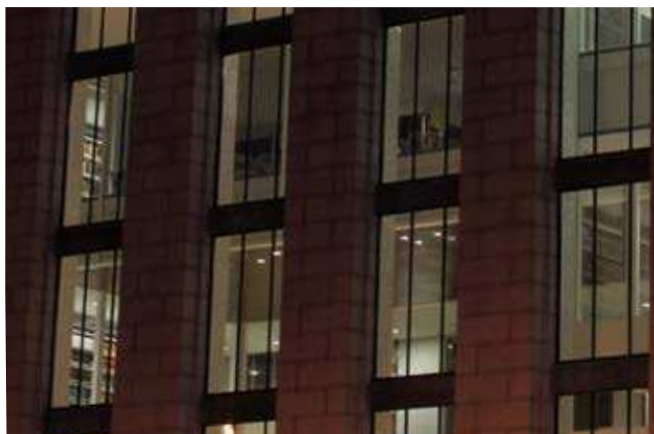
Eliminate empty aisles to gain even more storage capacity.





## ✓ OFF-SITE STORAGE

Storage of low-use material and research



## ✓ INTEGRATED COLLECTIONS

High-bay shelving isn't just for printed volumes. Take advantage of the optimal preservation environment in high-bay facilities by designating space for film, paintings, and other media.



# HISTORIC [MUSEUM CABINETS] PROTECTION

PROTECT ARCHIVAL MATERIALS LIKE MANUSCRIPTS,  
MEMORABILIA, AND OTHER UNIQUE OBJECTS WITH  
MUSEUM-QUALITY STORAGE SOLUTIONS.





## ✓ **FLAT-FILE CABINETS**

Ideal for storing maps, architectural plans, and other materials



## ✓ PRESERVATION CABINETS

Museum-quality sealed storage for preserving your collection.





✓ **MUSEUM TRAYS AND DRAWERS ON 4-POST SHELVING**

Cost-effective option for keeping small objects organized







✓ **ART RACKS**

Space-efficient storage for hanging art collections





## ✓ COLD STORAGE

Optimize space in cold storage areas



# INSPIRED SPACES START HERE

With 50 years in business and installations at thousands of libraries throughout North America, Spacesaver is uniquely qualified to help transform your library.

Your local Spacesaver consultants can provide detailed product information, drawings, and insights into the space planning process, and local technicians are close by for installation and future service calls. Best of all, your local contacts are always backed up by our in-house engineering, manufacturing, and project management expertise.

**PRE-APPROVED FOR  
PURCHASE ON SELECT  
STATE CONTRACTS**

**e**equalis  
GROUP



**OMNIA**  
PARTNERS

Contact us when you're ready to start designing inspired spaces for learning.

[storageplanning.com](http://storageplanning.com) | 503-612-2600

Serving Oregon and SW Washington

**Spacesaver  
Specialists, Inc.**

Your Storage Planning & Equipment Source

503-612-2600 - [sales@storageplanning.com](mailto:sales@storageplanning.com)

Spacesaver Specialists, Inc.  
9730 SW Herman Road  
Tualatin, OR 97062  
[www.storageplanning.com](http://www.storageplanning.com)

 **Spacesaver**<sup>®</sup>

Spacesaver Corporation  
1450 Janesville Avenue  
Fort Atkinson, WI 53538-2798  
800.492.3434  
[www.spacesaver.com](http://www.spacesaver.com)