

A photograph of a large industrial warehouse interior. The space is filled with rows of high-bay metal shelving units. The shelves are stocked with various items, including cardboard boxes and pallets. The floor is a smooth, light-colored concrete with yellow safety lines. The ceiling is high with visible structural beams and lighting fixtures. The overall atmosphere is one of a well-organized and spacious manufacturing or distribution facility.

COMPREHENSIVE STORAGE SOLUTIONS

for Manufacturing Spaces



Your Complete Solution

Provider for Manufacturing

Storage Needs

At Spacesaver, we understand the diverse storage requirements within the manufacturing industry, and how efficient storage supports unified operations. Manufactured in the USA, our innovative solutions are designed to optimize space, enhance organization, and improve supply chain management across all areas of your business.

High-Density Mobile Shelving Systems

Space Efficiency Throughout Your Facility

High-Density Mobile Shelving (HDMS) Systems allow you to store and do more. Unlike traditional static shelves that require a fixed amount of space per aisle, HDMS eliminates wasted aisle space, increasing storage capacity and/or workspace within the same square footage and optimizing the sustainability of your organization.



Standard High-Density Mobile Systems



Low-Profile Mobile Shelving



Heavy-Duty Mobile Racking

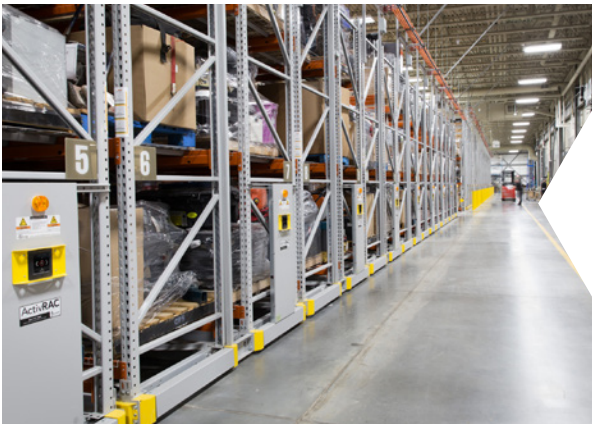


Standard High-Density Mobile Systems

Standard High-Density Mobile Systems eliminate fixed aisles by creating movable aisles that compact your storage space, allowing you complete accessibility to goods and materials while gaining space to directly impact your business.

Low-Profile Mobile Shelving

Spacesaver's Wheelhouse® low-profile moving shelving systems combine strength and adaptability in a low-cost modular system that makes the most of every inch of space. Its efficient design uses less steel and is manufactured from recycled material and low-emitting finishes, making it both durable and sustainable.



Heavy-Duty Mobile Racking

Spacesaver's ActivRAC® Mobilized Storage System eliminates idle aisles by mounting existing pallet racking or shelving onto mobile carriages that move along rails. These carriages have a load capacity of 3,000 to 30,000 lbs. and are fitted with a host of safety and security features.

MODES OF OPERATION



Powered



Mechanical Assist



Manual



ADD SPACE. WITHOUT EXPANDING.

Benefits of High-Density Mobile Systems:

- Improve access by storing more materials at point of use

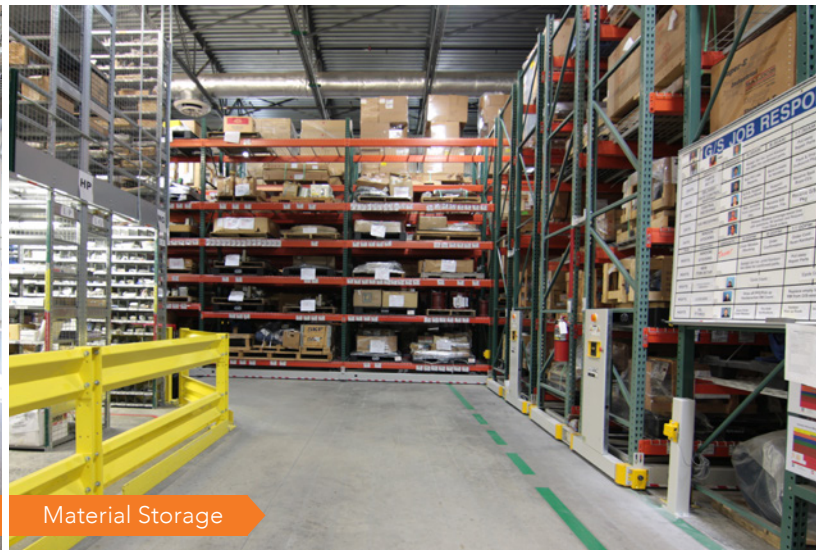
- Enhance supply chain management

- Increase user safety while maximizing capacity

- Boost organizational efficiency and productivity



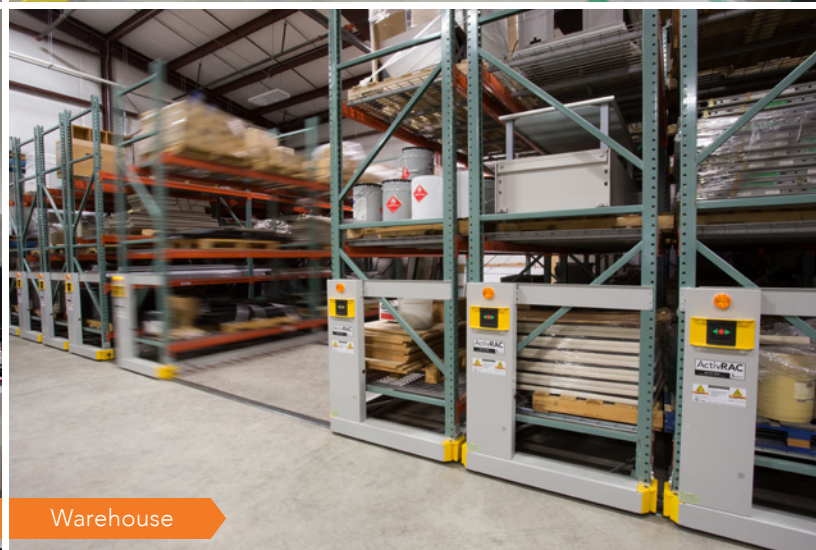
Office Storage



Material Storage



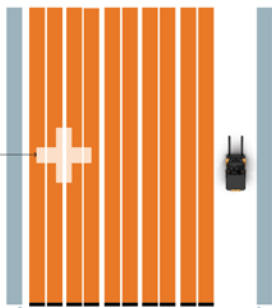
Shop Floor



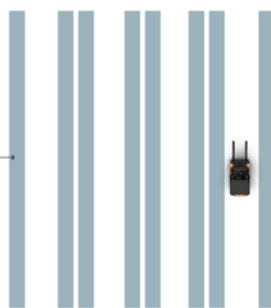
Warehouse

Storage Innovation for Your Creative Solutions

**HDMS
SYSTEMS**
STORE MORE
IN LESS
FOOTPRINT



**STEEL
SHELVING**
QUICK &
EFFICIENT
ACCESS



While High-Density Mobile Shelving (HDMS) systems allow you to store more materials in less footprint, they may not always be what is needed in your space.

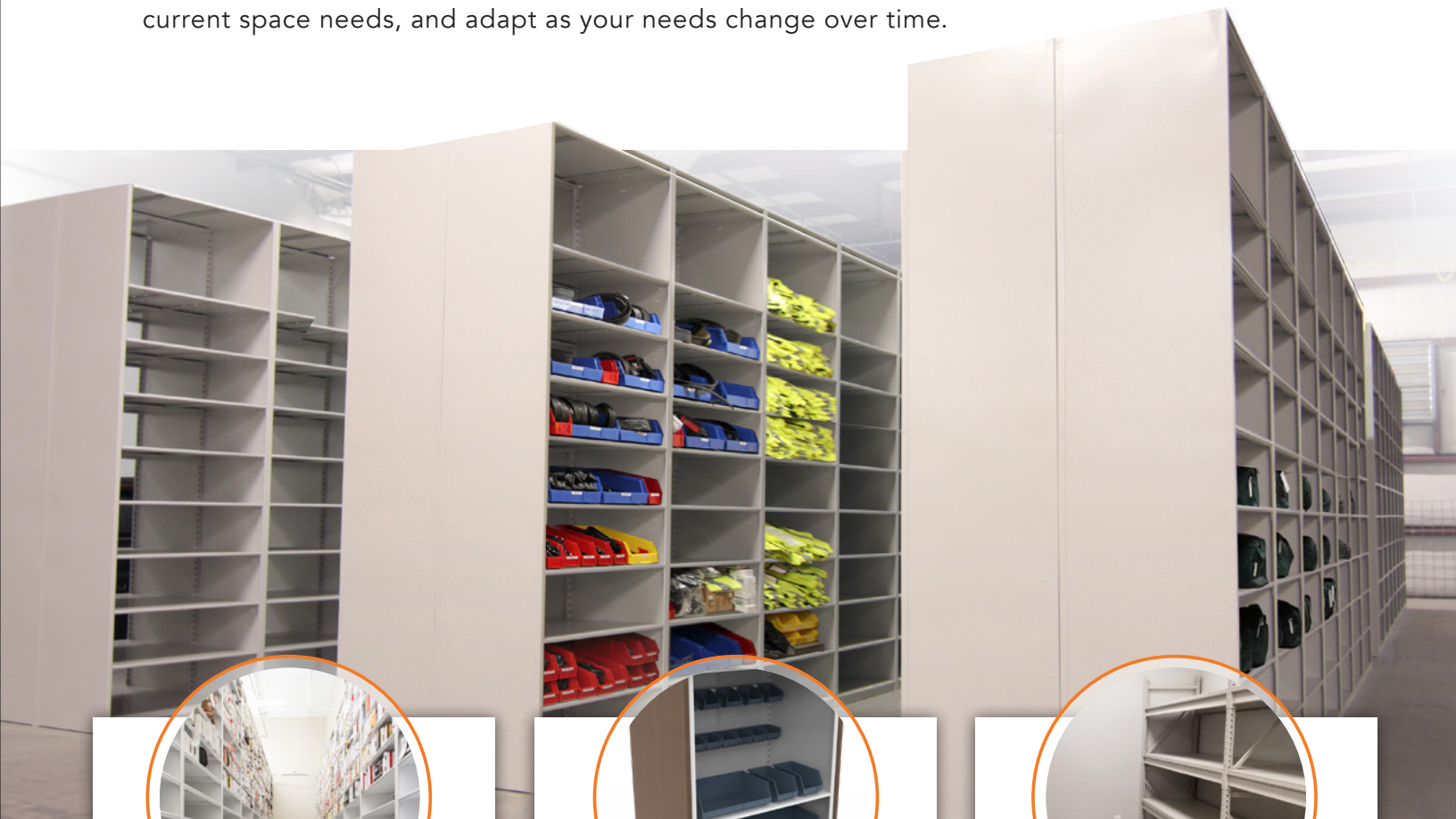
Our versatile steel shelving systems – which can be integrated into our HDMS systems for added versatility when needed – provide a dependable, standalone solution tailored for quick, efficient access in point-of-use applications.



Steel Shelving

Versatile Storage for Manufacturing Needs

Made from heavy-duty steel and finished with durable powder coat paint, these shelving units are built to last. Every Spacesaver shelving unit is designed for ease of installation, reconfiguration, and expansion, allowing you to choose the right shelving unit for your current space needs, and adapt as your needs change over time.



4-Post & Case-Type Shelving



Flexible Shelving



Widespan Shelving

4-Post & Case-Type Shelving

Spacesaver's 4-Post and Case-Type Shelving solutions are versatile systems designed to enhance efficiency, security, and capacity. These steel shelving units offer customizable options including doors, drawers, and various finishes. They are easy to assemble, reconfigure, and can be mounted onto Spacesaver's mobilized storage systems.

- » Ideal for organizing and storing equipment, tools, parts, and supplies
- » Enhances workflow by providing quick and easy access to stored items
- » Customizable with specialized accessories such as bins, trays, and dividers
- » Durable steel construction ensures longevity
- » Provides a clean storage space that promotes safety and efficiency

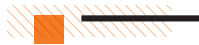


Flexible Shelving

Adaptable Solutions for Every Manufacturing Space

Designed to maximize utilization of limited space, this system facilitates adjustments to accommodate evolving workflows and storage needs. Its versatility allows for easy adaptation to production requirements, ensuring organization and accessibility of tools, parts, and supplies within manufacturing environments.

- » Frees up space for events, meetings, training, and more
- » Creates point-of-need storage wherever necessary
- » Configurable with 4-Post options
- » Spacesaver's 4-Post Flexible Shelving features secure shelves and exposed locking casters, ensuring items remain safely stored at all times



Widespan Shelving

Built with Purpose

RaptorRAC® Widespan Shelving is essential for facilities requiring heavy-duty storage solutions. Its durable design, including roll-formed upright posts and diagonal "Z" beam construction, ensures support for tools, equipment, and bulky materials.

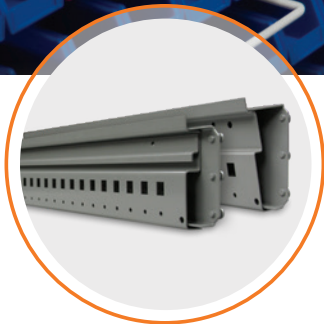
- » Suitable for providing storage of documents, records, and office supplies
- » Ideal for creating quick access to tools, equipment, and materials required for production processes
- » Offers storage solutions for bulky items, spare parts, and inventory
- » Optimizes space for storing supplies, maintenance equipment, and smaller tools



Modular Storage

See How EZ Our Systems Can WRX For You

If configuration is key for your business, Spacesaver's modular storage systems are what you are looking for. Made of vertical frames and horizontal rails that provide flexibility, our reconfigurable storage solutions allow you to change your layout on the fly to best fit your manufacturing space and use.



EZ Rail®
element



FrameWRX®
Bin Shelving



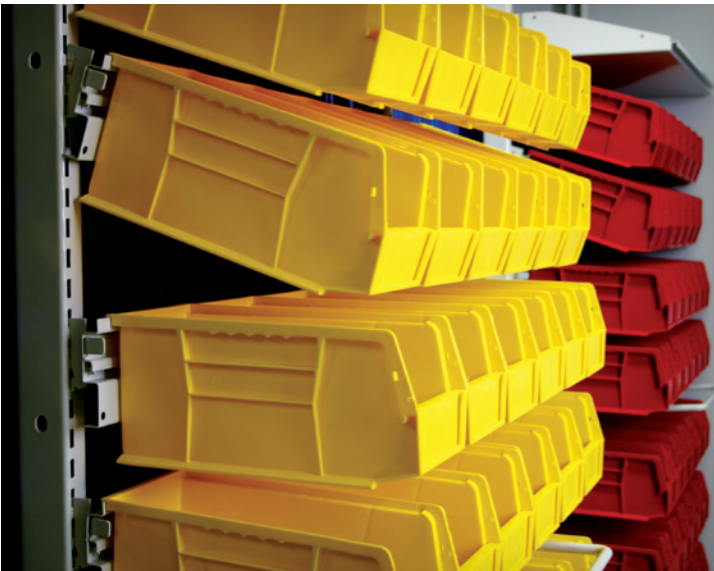
WRX Wheels®
Transport Cart



Modular Storage Rail

EZ Rail® element

Spacesaver's EZ Rail element modular storage rail is designed to add flexibility to your existing or new storage installations. A single-piece element designed to hold industry standard plastic bins, pegboard, slatrail, and slatwall accessories, EZ Rail can be installed without fasteners into Spacesaver storage systems such as 4-Post and Case-Type Shelving, as well as other manufacturers' brands.



Modular Storage System

FrameWRX® Bin Shelving

A popular solution in supply rooms, IT departments, and many other settings that require convenient compact storage, our FrameWRX® storage system is designed to facilitate efficient retrieval of your frequently accessed items. The system is fully configurable, allowing users to adjust on the fly.



Modular Carts

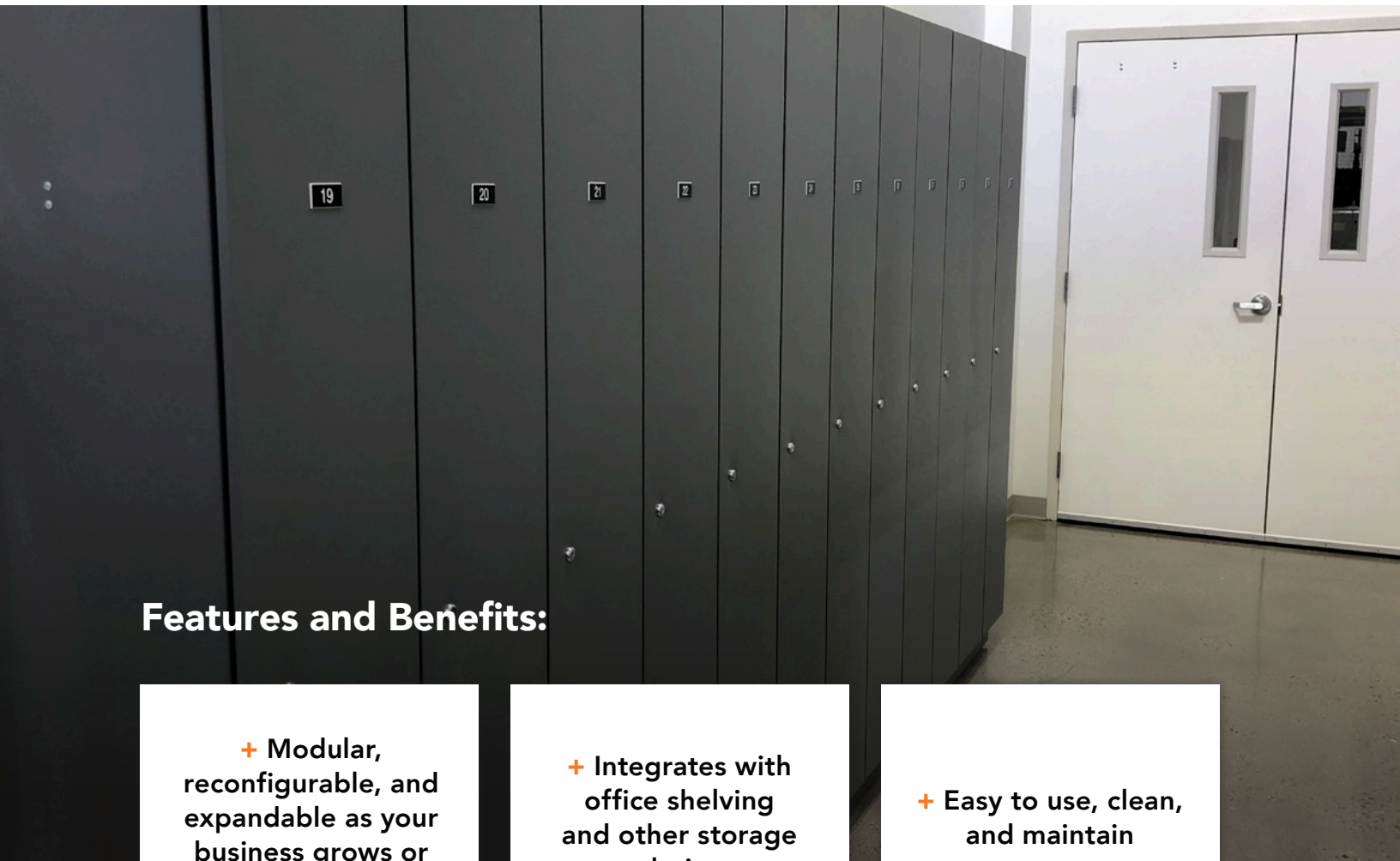
WRX Wheels® Transport Cart

Incorporating all the features and benefits of our FrameWRX® storage system, the WRX Wheels® transport system is ready to roll whenever you are. While traditional carts are only available in limited, fixed dimensions and configurations, our WRX Wheels transport system is designed to accommodate the items you use most today and adapt as your needs change in the future.

Lockers

Guard Your Gear, Unlock Accessibility

When you need to keep your belongings secure throughout the workday, our customizable locker lineup has a solution to fit all your department's needs.



Features and Benefits:

+ Modular, reconfigurable, and expandable as your business grows or changes

+ Integrates with office shelving and other storage solutions

+ Easy to use, clean, and maintain

Personal Storage Lockers

FreeStyle® Personal Storage Locker

Eventually everything in your organization – people, equipment, and storage requirements – is bound to change. That’s why we designed our FreeStyle® Personal Storage Lockers to adapt to your needs, all while minimizing interruption. The only on-site, end-user reconfigurable locker of its kind, FreeStyle Personal Storage Lockers allow you to meet your facility's personal storage needs, now and in the future.



Where To Use FreeStyle® Personal Storage Lockers:



Employee Locker Rooms

- » Store personal items, promoting a clean and organized environment



Gear Storage

- » Designed to meet the unique storage needs of employee uniforms, manufacturing tools, and accessories



Day Use Lockers

Flexible Storage Where It's Needed

Facilitate seamless transitions for employees with Day Use Lockers strategically placed throughout the facility, allowing secure storage and quick retrieval of personal items during breaks or shift changes.

- » Office Spaces
- » Locker Rooms
- » Fitness Centers
- » Lobbies

Unlock Quality

- » Heavy-duty steel frame
- » Built to withstand daily use for years

Unlock Style

- » Custom sizes, colors, and configurations
- » Full overlay steel and laminate door options

Unlock Convenience

- » Easy to use, clean, and maintain
- » Lock and technology options for any need



WHERE **EFFICIENT WORKFLOW** SOLUTIONS ARE MANUFACTURED.

ELEVATE YOUR MANUFACTURING EXPERIENCE WITH SPACESAVER

Spacesaver is not just a storage provider; we are your strategic partner in optimizing every inch of your manufacturing space.

+ EFFICIENCY

Streamline your workflow with quick and easy access.

+ SUSTAINABILITY

Prioritize the impact that your company is making to the environment with Spacesaver's commitment to sustainable manufacturing processes.

+ PRODUCTIVITY

Our solutions evolve with your needs, ensuring flexibility throughout your workplace.

THE SPACESAVER ADVANTAGE:

Spacesaver's nationwide network of local consultants works closely with you to design and custom-manufacture systems that perfectly fit your spaces and meet your specific needs. Our local, factory-certified technicians manage each installation and long-term maintenance requirement, ensuring seamless integration and ongoing support for the life of your systems.

Contact Spacesaver today and let's revolutionize your manufacturing storage together.

storageplanning.com | 503.612.2600

Serving Oregon and SW Washington



503-612-2600 - sales@storageplanning.com

Spacesaver Specialists, Inc.
9730 SW Herman Road
Tualatin, OR 97062
www.storageplanning.com



Spacesaver Corporation
1450 Janesville Avenue
Fort Atkinson, WI 53538-2798
800.492.3434
www.spacesaver.com

©2024 Spacesaver Corporation. Spacesaver is a subsidiary of KI. All Rights Reserved.
Litho in USA. SSC/DEL MFG_0224_Broch